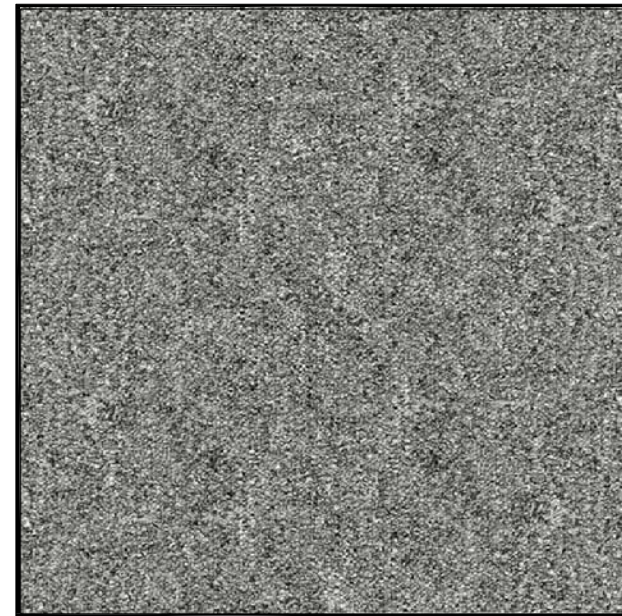


# Product Data Sheet

| GR112 Carpet Panel Performance Data Sheet On 10 and 40 Series Understructure |   |  |  |  |                         |
|--|---|--|--|--|-------------------------|
| 3.00   | Model Number  | 10 Series Pedestal Only Understructure     |  | 40 Series Understructure                           |                         |
| 3.10   |   | USCS                                       | SI   | USCS   | SI                      |
| 3.11   | Maximum Rolling Load:                                     |  |  |  |                         |
| 3.12   |   | Wheel 1: 10 Passes                         | 600 lbs<br>2.67 kN                                 | 800 lbs<br>3.56 kN                                 | 3.56 kN                 |
| 3.13   |   | Wheel 2: 10,000 Passes                     | 600 lbs<br>2.67 kN                                 | 800 lbs<br>3.56 kN                                 | 3.56 kN                 |
| 3.14   | Max. Rolling Load Permanent Set, in., Wheel 1:            |  | 0 in<br>0.00 mm                                    | 0 in<br>0.00 mm                                    | 0.00 mm                 |
| 3.15   | (Note 1)  | 10 Passes                                  | 0.010 in<br>0.24 mm                                | 0.010 in<br>0.24 mm                                | 0.24 mm                 |
| 3.16   | Max. Rolling Load Permanent Set,                          | Wheel 2: Start                             | 0 in<br>0.00 mm                                    | 0 in<br>0.00 mm                                    | 0.00 mm                 |
| 3.17   | (Note 2)  | 500 Passes                                 | 0.014 in<br>0.34 mm                                | 0.014 in<br>0.34 mm                                | 0.34 mm                 |
| 3.18   |   | 5,000 Passes                               | 0.018 in<br>0.44 mm                                | 0.018 in<br>0.44 mm                                | 0.44 mm                 |
| 3.19   |   | 10,000 Passes                              | 0.020 in<br>0.49 mm                                | 0.020 in<br>0.49 mm                                | 0.49 mm                 |
| 3.20   | Design Concentrated Load, 1" X 1" (2.54cm x 2.54cm) Block |  | 1250 lbs<br>5.56 kN                                | 1250 lbs<br>5.56 kN                                | 5.56 kN                 |
| 3.21   | Ultimate Concentrated Load,                               |  | 2916 lbs<br>12.97 kN                               | 2916 lbs<br>12.97 kN                               | 12.97 kN                |
| 3.22   | Design Uniform Load,                                      |  | 300 lbs/ft <sup>2</sup><br>12.40 kN/m <sup>2</sup> | 300 lbs/ft <sup>2</sup><br>12.40 kN/m <sup>2</sup> | 12.40 kN/m <sup>2</sup> |
| 3.23   | Ultimate Uniform Load                                     |  | 900 lbs/ft <sup>2</sup><br>37.19 kN/m <sup>2</sup> | 900 lbs/ft <sup>2</sup><br>37.19 kN/m <sup>2</sup> | 37.19 kN/m <sup>2</sup> |
| 3.24   | Maximum Drop Height for Impact, in., Body 1 (Note 3)      |  | 144 lbs<br>0.64 kN                                 | 144 lbs<br>0.64 kN                                 | 0.64 kN                 |
| 3.25   | Maximum Drop Height for Impact, in., Body 2 (Note 4)      |  | 84 lbs<br>0.37 kN                                  | 84 lbs<br>0.37 kN                                  | 0.37 kN                 |
| 3.26   | Materials of Construction - Shell                         |  | Galvanized Steel                                   |  |                         |
| 3.27   | Materials of Construction - Core                          |  | Resin Fiber  |  |                         |
| 3.28   | Painted Parts   |  | None   |  |                         |
| 3.29   | Ease of Access to Subfloor                                |  | High   |  |                         |
| 3.30   | Ease of Field Cutting and Sawing                          |  | Easy   |  |                         |
| 3.31   | Nonmagnetic (Nonferrous)                                  |  | No   |  |                         |
| 3.32   | Fuel Contribution Factor per ASTM E-84-84                 |  | 5  |  |                         |
| 3.33   | Flame Spread per ASTM E-84-84                             |  | 5  |  |                         |
| 3.34   | Smoke Density Factor per ASTM E-84-84                     |  | 0  |  |                         |
| 3.35   | Static Dissipation  |  | Excellent  |  |                         |
| 3.36   | Carpet Static   | Mohawk                                     | AATCC-134 Under 3.5KV                              |  |                         |
| 3.37   | Carpet Flammability                                       |  | ASTM E 648 Class 1                                 |  |                         |
| 3.38   | Carpet Smoke Density                                      |  | ASTM E 662 Less than 450                           |  |                         |
| 3.39   | Thermal Conductivity                                      |  | 1.2 BTU/hr x ft <sup>2</sup> x F                   | 6.80832 Watt/m <sup>2</sup> x Kelvin               |                         |
| 3.40   | Max. Ohms (DC) Between Uncovered Surface and Bottom Pan   |  | 1  |  |                         |
| 3.41   | Resistance to Oxidation in High Humidity                  |  | Fair   |  |                         |
| 3.42   | Resistance to Acids and Polar Solvents                    |  | Poor   |  |                         |
| 3.43   | Resistance to Organic (Nonpolar) Solvents                 |  | Fair   |  |                         |
| 3.44   | Suitable Covering Material                                |  | All  |  |                         |
| 3.45   | Weight,   |  | 7.5 lbs/ft <sup>2</sup>                            | 36.82 kg/m <sup>2</sup>                            |                         |
| 3.46   | Overall Dimensions Less Covering Material, L' X W'        |  | 24in x 24in  | 60.96cm x 60.96cm                                  |                         |
| 3.47   | Depth at Edge Less Covering Material, in.                 |  | 1.07 in  | 27.18 mm   |                         |
| 3.48   | Warranty  |  | 1 Year   |  |                         |
| 3.49   | Approximate Delivery                                      | <3000 Ft <sup>2</sup> (300m <sup>2</sup> ) | 3 Weeks  |  |                         |
| 3.50   |   | >3000 Ft <sup>2</sup> (300m <sup>2</sup> ) | 5 Weeks  |  |                         |

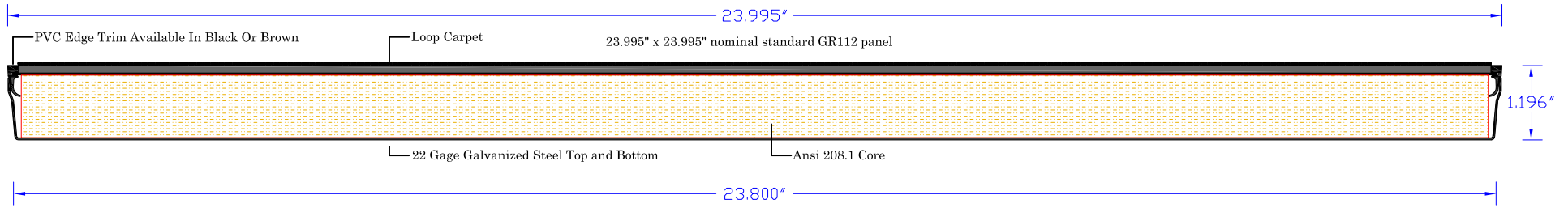
Notes:

1. Wheel 1: 3" dia. x 1-13/16" wide
2. Wheel 2: 6" dia. x 1-1/2" wide
3. Body 1: 2" dia. steel indenter, 10 lbs.
4. Body 2: 12" dia. soft bag, 90 lbs.
5. Panels and understructure can be custom designed to meet the requirements of any application.
6. All values given are for panels less covering material.



23.995"

PVC Edge Trim available in Black or Brown



|   |                |                   |              |
|---|----------------|-------------------|--------------|
| JOB: Typical  | REVISED BY:    | DATE:             | DESCRIPTION: |
| CEI PART #: GR112 CPT   |                |                   |              |
| DRAWN BY: M.C.  |                |                   |              |
| PAPER SIZE = 8.5" x 11" LASER   |                |                   |              |
| SHEET: 1 of 1   | SCALE: 2.5 = 1 | DATE: 15 MAR 2016 |              |
| PATH=C:\documents and settings\authorized user\desktop\autocad drawings\carpet product data sheet.dwg |                |                   |              |

**Computer Environments Inc.**  
 1616 JOHN WEST ROAD DALLAS, TX, USA 75228 214 321 1234 FAX 214 321 2333 ceifloor.com  
 Manufactured in the U.S.A.

PART OR PROJECT DESCRIPTION Standard Panel Section With Factory Applied Carpet