

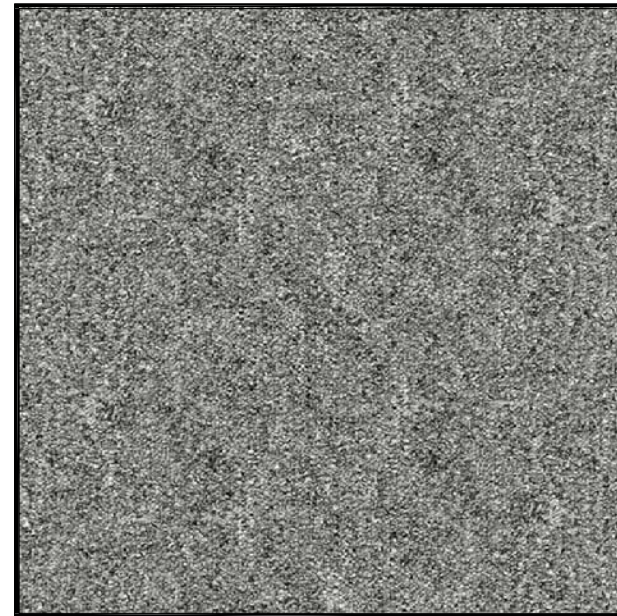
# Product Data Sheet

GR112 Carpet Panel Performance Data Sheet On 10 and 40 Series Understructure

3.00	Model Number	GR112 on 10 Series Pedestal Only Understructure		GR112 on 40 Series Understructure	
		USCS	SI	USCS	SI
3.10					
3.11	Maximum Rolling Load With 10 Series Understructure, #:				
3.12		Wheel 1: 10 Passes	600 lbs 2.67 kN	800 lbs 3.56 kN	
3.13		Wheel 2: 10000 Passes	600 lbs 2.67 kN	800 lbs 3.56 kN	
3.14	Max. Rolling Load Permanent Set, in., Wheel 1:		0 in 0.00 mm	0 in 0.00 mm	
3.15	(Note 1)	10 Passes	0.010 in 0.24 mm	0.010 in 0.24 mm	
3.16	Max. Rolling Load Permanent Set,	Wheel 2: Start	0 in 0.00 mm	0 in 0.00 mm	
3.17	(Note 2)	500 Passes	0.014 in 0.34 mm	0.014 in 0.34 mm	
3.18		5000 Passes	0.018 in 0.44 mm	0.018 in 0.44 mm	
3.19		10000 Passes	0.020 in 0.49 mm	0.020 in 0.49 mm	
3.20	Design Concentrated Load, 1" X 1" (2.54cm x 2.54cm) Block		1250 lbs 5.56 kN	1250 lbs 5.56 kN	
3.21	Ultimate Concentrated Load,		2916 lbs 12.97 kN	2916 lbs 12.97 kN	
3.22	Design Uniform Load,		300 lbs/ft <sup>2</sup> 12.40 kN/m <sup>2</sup>	300 lbs/ft <sup>2</sup> 12.40 kN/m <sup>2</sup>	
3.23	Ultimate Uniform Load		900 lbs/ft <sup>2</sup> 37.19 kN/m <sup>2</sup>	900 lbs/ft <sup>2</sup> 37.19 kN/m <sup>2</sup>	
3.24	Maximum Drop Height for Impact, in.; Body 1 (Note 3)		144 lbs 0.64 kN	144 lbs 0.64 kN	
3.25	Maximum Drop Height for Impact, in.; Body 2 (Note 4)		84 lbs 0.37 kN	84 lbs 0.37 kN	
3.26	Materials of Construction - Shell		Galvanized Steel		
3.27	Materials of Construction - Core		Resin Fiber		
3.28	Painted Parts		None		
3.29	Ease of Access to Subfloor		High		
3.30	Ease of Field Cutting and Sawing		Easy		
3.31	Nonmagnetic (Nonferrous)		No		
3.32	Fuel Contribution Factor per ASTM E-84-84		5		
3.33	Flame Spread per ASTM E-84-84		5		
3.34	Smoke Density Factor per ASTM E-84-84		0		
3.35	Static Dissipation		Excellent		
3.36	Carpet Static		AATCC-134 Under 3.5KV		
3.37	Carpet Flammability		ASTM E 648 Class 1		
3.38	Carpet Smoke Density		ASTM E 662 Less than 450		
3.39	Thermal Conductivity		1.2 BTU/hr x ft <sup>2</sup> x °F	6.80832 Watt/m <sup>2</sup> x Kelvin	
3.4	Max. Ohms (DC) Between Uncovered Surface and Bottom Pan		1		
3.41	Air Leakage at 5" s.w.g. (124.5 Pa) Volume/Panel Joint Distance		0.05 ft <sup>3</sup> /ft	0.0046 m <sup>3</sup> /m	
3.42	Resistance to Oxidization in High Humidity		Fair		
3.43	Resistance to Acids and Polar Solvents		Poor		
3.44	Resistance to Organic (Nonpolar) Solvents		Fair		
3.45	Suitable Covering Material		All		
3.46	Weight,		7.5 lbs/ft <sup>2</sup>	36.62 kg/m <sup>2</sup>	
3.47	Overall Dimensions Less Covering Material, L' X W'		24in x 24in	60.96cm x 60.96cm	
3.48	Depth at Edge Less Covering Material, in.		1.07 in	27.18 mm	
3.49	Warranty		1 Year		
3.5	Approximate Delivery	<3000 Ft <sup>2</sup> (300m <sup>2</sup> )	3 Weeks		
3.51		>3000 Ft <sup>2</sup> (300m <sup>2</sup> )	5 Weeks		

Notes:

1. Wheel 1: 3" dia. x 1-13/16" wide
2. Wheel 2: 6" dia. x 1-1/2" wide
3. Body 1: 2" dia. steel indenter, 10 lbs.
4. Body 2: 12" dia. soft bag, 90 lbs.
5. Panels and understructure can be custom designed to meet the requirements of any application.
6. All values given are for panels less covering material.



23.995"

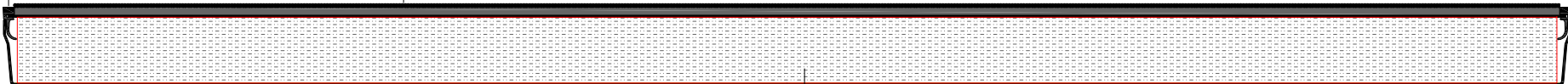
PVC Edge Trim available in Black or Brown

23.995"

PVC Edge Trim Available In Black Or Brown

Loop Carpet


23.995" x 23.995" nominal standard GR112 panel



22 Gauge Galvanized Steel Top and Bottom

Ansi 208.1 Core

23.800"

JOB: Typical	REVISED BY:	DATE:	DESCRIPTION:
CEI PART #: GC116 CPT			
DRAWN BY: M.C.			
PAPER SIZE = 8.5" x 11" LASER			
SHEET: 1 of 1   SCALE: 2.5 = 1   DATE: 15 MAR 2016			
PATH=C:\documents and settings\authorized user\desktop\autocad drawings\carpet product data sheet.dwg			
 <b>Computer Environments Inc.</b> 1616 JOHN WEST ROAD DALLAS, TX, USA 75228 214 321 1234 FAX 214 321 2333 ceifloor.com Manufactured in the U.S.A.			
PART OR PROJECT DESCRIPTION Standard Panel Section With Factory Applied Carpet			